

LEONAY PUBLIC SCHOOL

Term 2 Calendar



23/6 - 4/7	Canteen Closed
25/6	Years 3-6 Spelling Bee
25/6	PSSA Boys Soccer Knockout Competition
26/6	Sydney West Cross Country
27/6	NAIDOC Cup
30/6	School NAIDOC Day
2/7	Years K-2 Spelling Bee
2/7 - 4/7	Stage 3 Canberra Excursion
4/7	Last Day of Term 2

Term 3 Calendar

21/7	Staff Development Day
22/7	Students Return to School

ASSEMBLY DATES TERM 2

27/6

NOTES HOME ON COMPASS

NAIDOC Cup - Consent Due 25/6

Staffing Changes

Today we farewell Mrs Tina Gordon as she retires from her position of School Administrative Officer at Leonay PS. She has worked with us for over 9 years. We will truly miss her friendly and helpful nature and her cheery hello at the front counter each day. Mrs Brigitte Trouve will return to work at Leonay PS from Term 3.

Canteen Upgrade

From today the canteen will be closed in preparation for the new refurbishment beginning next week. We are very excited about this. Thank you to the P and C for all your work in making this happen. A Compass message will be sent out next term when we know the start date for operations. The pathway leading into the canteen area will be blocked off at various times due to work. Students riding bikes will need to enter and exit using a different gate.

Colour Run

Thank you so much to the community for supporting our school Colour Run last week. We raised just over \$10,000. This will certainly help to purchase new laptops for the rooms. When prizes arrive and are sorted they will be distributed.

Spelling Bee

Our 2025 Spelling Bee competitions are fast approaching. Parents and carers are welcome to attend the events.

Details are as follows:

Years 3-6 - Wednesday 25 June

9.15am Years 5 and 6

10.15am Years 3 and 4

K-2- Wednesday 2 July

9.15am Year 2, Year 1, Kindergarten

All sessions will be held in the library. If your child is competing, please remind them, they need to say the word, spell the word and then say the word again at the end to sign off their turn.

Student Achievements- Congratulations to the following students:

Lewis W and Angus W - Penrith PSSA Soccer team

Evie A - Synergy Dance Festival as part of the Greater Western Sydney Dance Ensemble

All three represented our school and the district with great pride. Well done.

NAIDOC Open Day - Monday 30 June- 11.40am - 3.00pm.

NAIDOC stands for National Aborigines and Islanders Day Observance Committee. NAIDOC Week is held in the first full week of July. It is a time to celebrate Aboriginal and Torres Strait Islander history, culture and achievements and is an opportunity to recognise the contributions that Indigenous Australians make to our country and our society. At Leonay PS all classes will be involved in a variety of activities on Monday 30 June. These include Aboriginal sport, stories and music. At 2pm the whole school will listen to Jason and Trevor from Dalmarri, who will present Aboriginal stories and artefacts. Parents are most welcome to join us on the day from 11.40am onwards.

Crazy Hair Day

Thank you to everyone who donated to support Carter's fundraising efforts for the Black Dog Institute. As a school we raised \$355 to support his cause. If you would like to make a further donation then we will send a link out in the Week 10 newsletter.

School Community Charter

In this week's newsletter, I have attached the NSW Department of Education's School Community Charter which outlines the code of conduct of all school community members in NSW Public Schools. All parents and community members are asked to always comply with this code of conduct. When speaking with and about staff and students, all members of the school community are expected to treat each other with respect and common courtesy. We consistently set high expectations for all learners in our school and working together will ensure that our school continues to thrive.

Semester One Student Progress Reports

These reports will be available to families on Monday 30 June via the student portal in Compass.

P & C Meeting

Next meeting 18 August - 7pm- Zoom- contact the school for the link

Assembly

Final assembly for the term – Friday 27 June. 1/2F are performing. Parents and carers are invited to attend. Please QR code in prior to entering the hall.

Miss Payne

The Anxiety Project- Feedback

We are excited to share the positive outcomes we are witnessing through 'The Anxiety Project' (TAP) at our school. Many students are demonstrating increased resilience and are effectively using the vocabulary they have learned during lessons to articulate their feelings in challenging situations. It has been heartwarming to hear numerous success stories from parents about how TAP is influencing their children at home. The skills being developed in the classroom are having a wonderful flow-on effect, enhancing not only school life but also family dynamics.

We would love to hear more about the effects this project is having on your children. Your feedback is invaluable in helping us understand the impact of TAP in our community. Additionally, we are considering running another parent workshop in Term 3 to further support you and your children.

To help us gather this information, we kindly ask you to take a moment to fill out the following survey. It should only take about 2 minutes of your time, and your insights would be greatly appreciated.

<https://forms.office.com/r/u4UzGhPp6H>

Thank you for your continued support and involvement in your child's education!



Applications are now open for children eligible to start Kindergarten in 2026. Children may be enrolled in Kindergarten at the beginning of the school year if they turn five years of age by 31 July of that year. Applications to enrol for students in the Leonay area can be made online through the school's website by clicking on the enrolments tab. Out of area applications can now also be made online from the website and include additional documentation as part of the process. Once received the office will email you with further instructions. If you know of anyone in the Leonay area who is considering enrolling, encourage them to do so now. Please ring the office to if you have any questions.

Before School Supervision

The school supervision roster starts from 8.30am each morning. There is no staff available to ensure the safety of children in the playground prior to that time. Whatever arrangements are made, parents need to understand that they are legally responsible for their child prior to 8.30am when supervision begins. Please ensure that your child is not left unsupervised at school before 8.30am.

School Carpark - Out of Bounds

Due to safety concerns, please note that all carpark and driveway areas are out of bounds for both students and parents. I encourage all parents to walk safely on path areas both before school and in the afternoon, setting a positive example to their children. Please remember the Kiss and Drop rules for Fairways Ave. Parents and carers are able to legally drop off or pick up their children within a two-minute timeframe. Penrith Council rangers have been patrolling this area recently as a result of a number of complaints. Please adhere to the rules for the safety and welfare of our students and community.

Save the Date

Education Week Open Day- Wednesday 6 August. 9.00-11.45am
More information to follow regarding specific events.

Book Buddies

There will be no Book Buddies from Monday 30 June to the end of the term Friday 4 July.

ICAS Assessments 2025

In 2025 Leonay PS students have the opportunity to sit for Digital Technologies (years 3-6), English and Mathematics (years 2-6). The tests are conducted at school much like the NAPLAN assessments. In 2024 all tests for students will be completed online using a computer.

Each test will cost \$20.95. Payments will be made online through the link below: Please do not pay via the school

Your school access code is: JIP559

<https://shop.icasassessments.com/pages/parent-payment/JIP559>

Your child can also prepare for ICAS using Practice Online. Sample questions are available for English, mathematics and Digital technologies. For more information, please visit the Educational Assessment Australia website at <https://www.icasassessments.com/products-icas/>



School Community Charter

 **Collaborative. Respectful. Communication.**

The following School Community Charter outlines the responsibilities of parents, carers, educators and school staff in NSW public schools to ensure our learning environments are collaborative, supportive and cohesive.

What our schools provide

NSW public schools work to create positive environments for students, staff and the entire school community that support student learning. We strive to ensure that every student is known, valued and cared for.

The best education happens when parents and schools work together.

The School Community Charter aligns with the NSW Department of Education Strategic Plan 2018 - 2022.



Positive environments

It is important that our NSW public schools are positive environments and that parents and carers are kept informed of students' progress and school announcements.

Parents and carers can expect:

- to be welcomed into our schools to work in partnership to promote student learning.
- communication from school staff will be timely, polite and informative.
- professional relationships with school staff are based on transparency, honesty and mutual respect.
- to be treated fairly. Tolerance and understanding are promoted as we respect diversity.

We treat each other with respect

We prioritise the wellbeing of all students and staff

Unsafe behaviour is not acceptable in our schools

We work together with the school

Ensuring respectful learning environments for all members of NSW Public Schools communities.

© NSW Department of Education



We create
collaborative
learning
environments

We
all play
a part

We work
in partnership
to promote
student
learning

Communicating with our schools

Our staff will find a time to talk to you when they can give you their full attention. Please remember that while our staff are in class or dealing with other matters, they may not be available to answer your questions immediately.

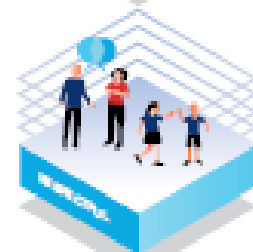
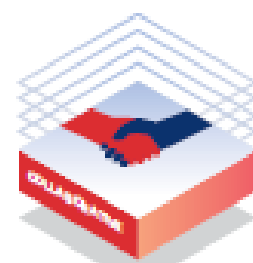
Our schools and communities will make sure that written communication is appropriate, fair and easy to read. We encourage you to use email and social media appropriately to connect with your school and stay up-to-date with up-coming events in the school community.

Our guide for parents, carers and students provides useful information about the complaints process: education.nsw.gov.au/about-us/rights-and-accountability/complaints-compliments-and-suggestions/guide-for-parents-carers-and-students

Respectful communication is a right

In all workplaces people have the right to feel respected. Unacceptable and offensive behaviour has no place in our school communities.

To ensure the wellbeing of students, staff and the community in our schools, steps will be taken to address unacceptable behaviour. This may include restricting contact with the school community or, in more serious cases, referral to NSW Police.



Unacceptable behaviour may include but is not limited to:

- Aggressive or intimidating actions, such as violence, threatening gestures or physical proximity.
- Aggressive or intimidating language, including the use of obscenities, making sexist, racist or derogatory comments or using a rude tone.
- Treating members of the school community differently due to aspects such as their religion or disability.
- Inappropriate and time wasting communication.



**Collaborative.
Respectful.
Communication.**

School Community Charter

education.nsw.gov.au

National Disability Insurance Scheme (NDIS)

Information for schools

The NDIS funds specialist disability services for people with significant and permanent disabilities. NDIS participants determine how their funding is used to support them.

What is the NDIS?

The NDIS is an Australia-wide scheme to support people aged 0 to 65 years with permanent and significant disability. In NSW, about 177,000 people with disability are expected to join the NDIS, including around 89,000 children and young people.

Through the NDIS, people with disability will be able to access 'reasonable and necessary' supports to achieve their personal goals. Reasonable and necessary supports are those that help participants to live an ordinary life – that is, build their skills and capability so they can take part in education, employment and community activities. The NDIS gives participants more choice and control over which disability supports they access and how those supports are provided.

A person will be eligible for the NDIS if they have a lifelong disability that significantly affects their ability to participate in the community. People can check their eligibility on the NDIS website, using an eligibility checklist.

The NDIS is managed by the National Disability Insurance Agency, or NDIA. The

NDIA is responsible for determining eligibility for the scheme and for developing personalised support plans for participants. The NDIA does not directly provide disability services, it provides funding to participants to purchase services for themselves.

The NDIS funds supports for eligible people based on their individual needs

The types of supports the NDIS may fund include:

- daily personal activities
- transport to participate in community, social, economic and daily life activities
- help to get or keep a job in the open or supported labour market
- therapeutic supports, including allied health and behaviour support
- help with household tasks
- aids and equipment, including assessment, set up and training
- mobility equipment
- home or vehicle modifications.

More information on funded supports is available on the [NDIS website](http://www.ndis.gov.au).

Schools remain responsible for meeting the personalised learning and support needs of students with disability

The Disability Standards for Education 2005 continue to apply to schools. Schools remain responsible for making adjustments to personalise learning and support for students with disability that enable those students to participate on the same basis as other students.

The NDIS will fund reasonable and necessary supports that a student requires due to the functional impact of their disability on their daily life. There are still some areas of uncertainty and overlap of responsibility between schools and the NDIS, these are being negotiated between the NSW Government and the NDIA. Until they are resolved, schools should continue to support students with disability consistent with current obligations.

The Early Childhood (EC) approach is for children under 9 with a developmental delay or disability

The EC approach supports children aged under 9 years and their families develop the skills they need to take part in daily activities. The NDIS has engaged experienced service providers, known as Early Childhood Partners, to deliver the EC approach. Children do not need a diagnosis to access EC supports and families can self-refer. Some children who access EC supports may go on to receive an individual NDIS plan.

Find an [Early Childhood Partner](#) near you.

Families may ask for NDIS-funded services to be delivered at school

Principals decide whether service providers funded by the NDIS can deliver their services on school grounds during school hours. In making this decision, principals should consult with parents or carers, and consider the learning and support needs of the student, the school's operational context, and the impact the service may have on other students and school staff.

[An information package](#) sets out the matters that principals need to consider in their decision making, as well as the legislative and policy requirements that service providers must meet before they can operate in schools. The package also includes information sheets for parents and carers, and service providers.

Collaboration between schools, families and providers can still occur without therapy being delivered at school. For example, there may be opportunities to work with families to align a student's learning and support plan with the supports in their NDIS plan. NDIS Coordinators for NSW public schools can provide advice and support during this process.

More NDIS resources for schools

More fact sheets are available on the department's [NDIS webpage](#):

- Assistive Technology and the NDIS
- Early Childhood (EC) approach
- Assisted School Travel Program and the NDIS
- Personal Care in Schools and the NDIS
- Supporting families to understand and access the NDIS
- Supporting families during the NDIS planning process
- NDIS Quality and Safeguarding Arrangements

More information

NDIS

1800 800 110

[NDIS website](#)